

SFDPH's Hepatitis C Initiative: Program Design, Implementation, and Progress



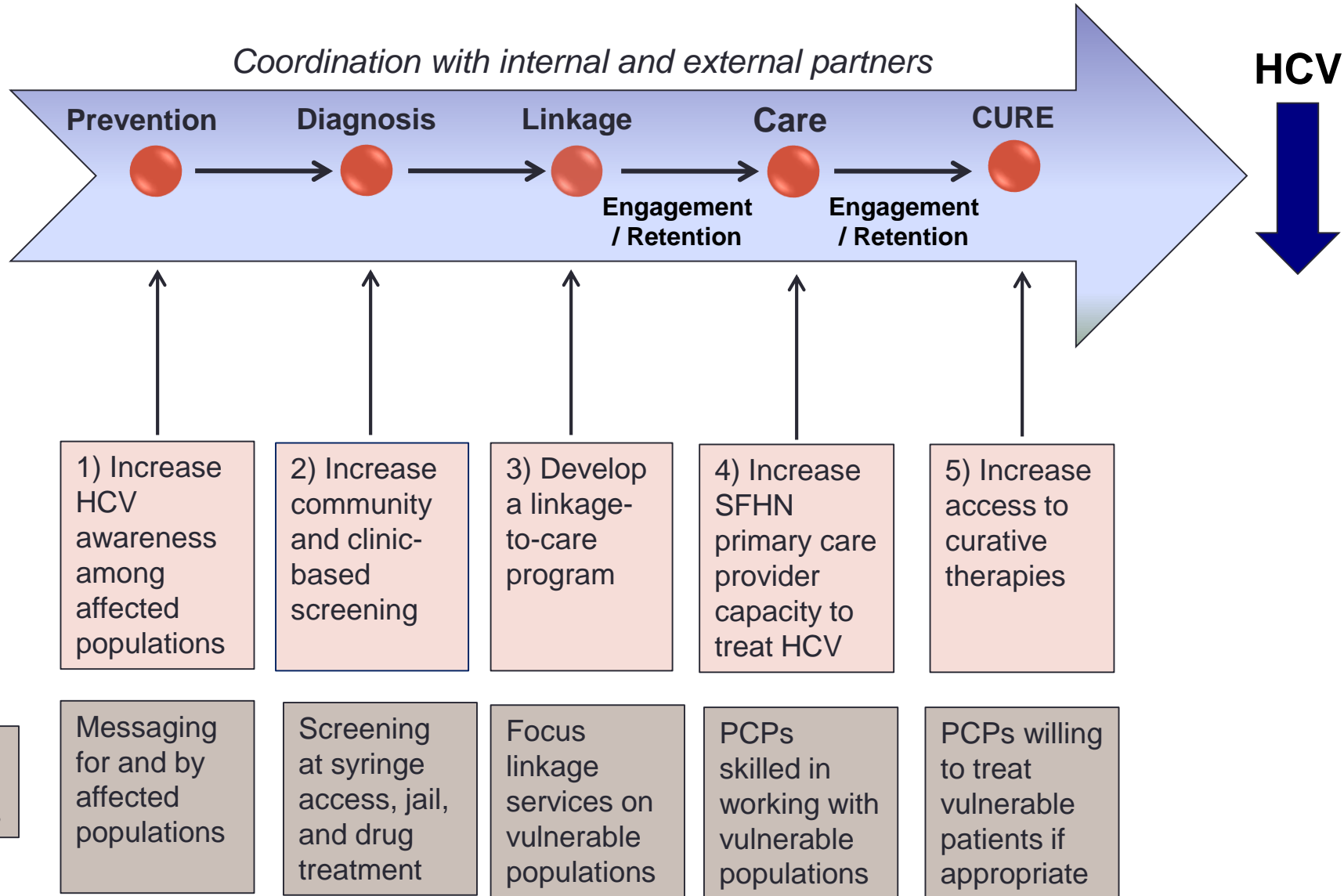
Presented by: **Katie Burk, MPH**
Viral Hepatitis Coordinator
Community Health Equity and Promotion branch

San Francisco by the numbers

- SF with > 16,000 unduplicated cases of HCV since data collection started (past or present cases)
- 22,500 PWID (Chen 2015 AIDS & Behavior)
 - NHBS data suggest 60% (n=13,500) are living with HCV
- 16,000 HIV+ individuals in SF end of 2015*
- > 2400 HCV+ patients in SF Health Network (primary care clinics of SFGH)
- 6,866 homeless individuals per One Night Count 2015
- Highest rate of liver cancer in the US

*HIV Count and Survey. Accessed at [https://www.sfdph.org/dph/files/reports/RptsHIVAIDS/HIV-EpidemiologyAnnualReport-2014.pdf](http://sfgov. Epidemiology Annual Report 2014. The San Francisco Department of Public Health. Population Health Division, HIV Epidemiology Section. Available at <a href=).

SFDPH's 5 HCV Programmatic Goals



Goal #1: Increase awareness among affected populations.

Sharing equipment spreads Hep C Come get sterile stuff



There is new hope for people with Hep C
Come visit us to talk about the new cure

San Francisco AIDS Foundation
Syringe Access Services
117 6th Street
San Francisco, CA 94103
stat@endhepcsf.org
For more info, visit www.endhepcsf.com



We can't treat Hep C if we don't know we have it.



There is new hope for people with Hep C
Come visit us to talk about the new cure

Glide Harm Reduction Program - 5th floor
330 Ellis Street (between Taylor & Jones)
San Francisco, CA 94102
(415) 674-5188 / hepc@glide.org
For more info, visit www.endhepcsf.org



Living with Hep C? New treatments have changed the game.



There is new hope for people with Hep C
Come visit us. Talk about the new treatments. **Get tested.**

HealthRIGHT 360
330 Ellis Street, 6th Floor
San Francisco, CA 94102
(415) 674-6140
hr360@endhepcsf.org
For more info, visit www.endhepcsf.org



Messaging for and by drug users

Goal #2: Increase community and clinic-based screening.

Where does HCV screening happen in San Francisco?

- Primary care clinics
- Syringe access programs
- County jail
- Transgender community group
- Methadone programs
- Residential treatment programs
- Single room occupancy hotels
- City Clinic
- Mobile units

For which vulnerable populations does SFDPH support screening?

- People who inject drugs
- People incarcerated in the county jail
- Transgender women
- MSM on PrEP
- People who smoke stimulants

Goal #3: Develop a Linkage-to-Care Program*



3 SF-based programs funded in 2016 (Glide, SFAF, HR 360)

Aims

1. Increased access to HCV screening in community-based screening
2. Increased number of people with HCV who get connected to care
3. Improved HCV treatment initiation and completion rates

**Community-based linkage supported by CDPH, General Fund, and SAMHSA*

4) Increase SFHN primary care provider capacity to treat HCV

- Patient-centered
- Feasible & safe
- Efficient
- Satisfying (to staff and patients alike)
- Increases access for vulnerable populations
- In the SFHN, primary care providers are skilled at caring for people who use drugs.
- Allows for treatment of HCV in conjunction with opioid replacement services

4) Increase SFHN primary care provider capacity to treat HCV

- **Trainings**

- Since January 2016, approximately 130 clinical staff participated in in-person PC-based HCV Treatment trainings

- **Electronic consultation**

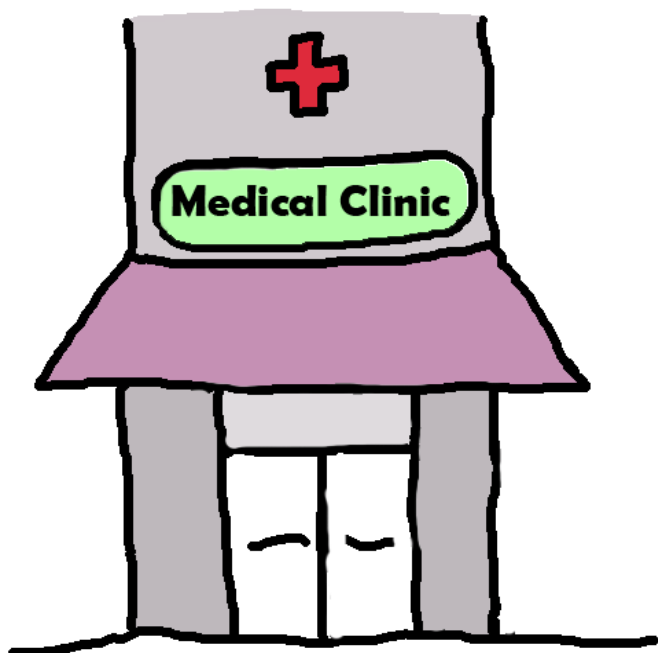
- Pre-treatment work-up
- Regimen selection
- Navigating insurance
- Monitoring on treatment

- **Technical Assistance to individual clinics**

- Primary Care settings
- Adolescent health program
- Residency training programs at UCSF
- Shelter Health & Street Medicine
- (Substance use program and psychiatry to come soon)

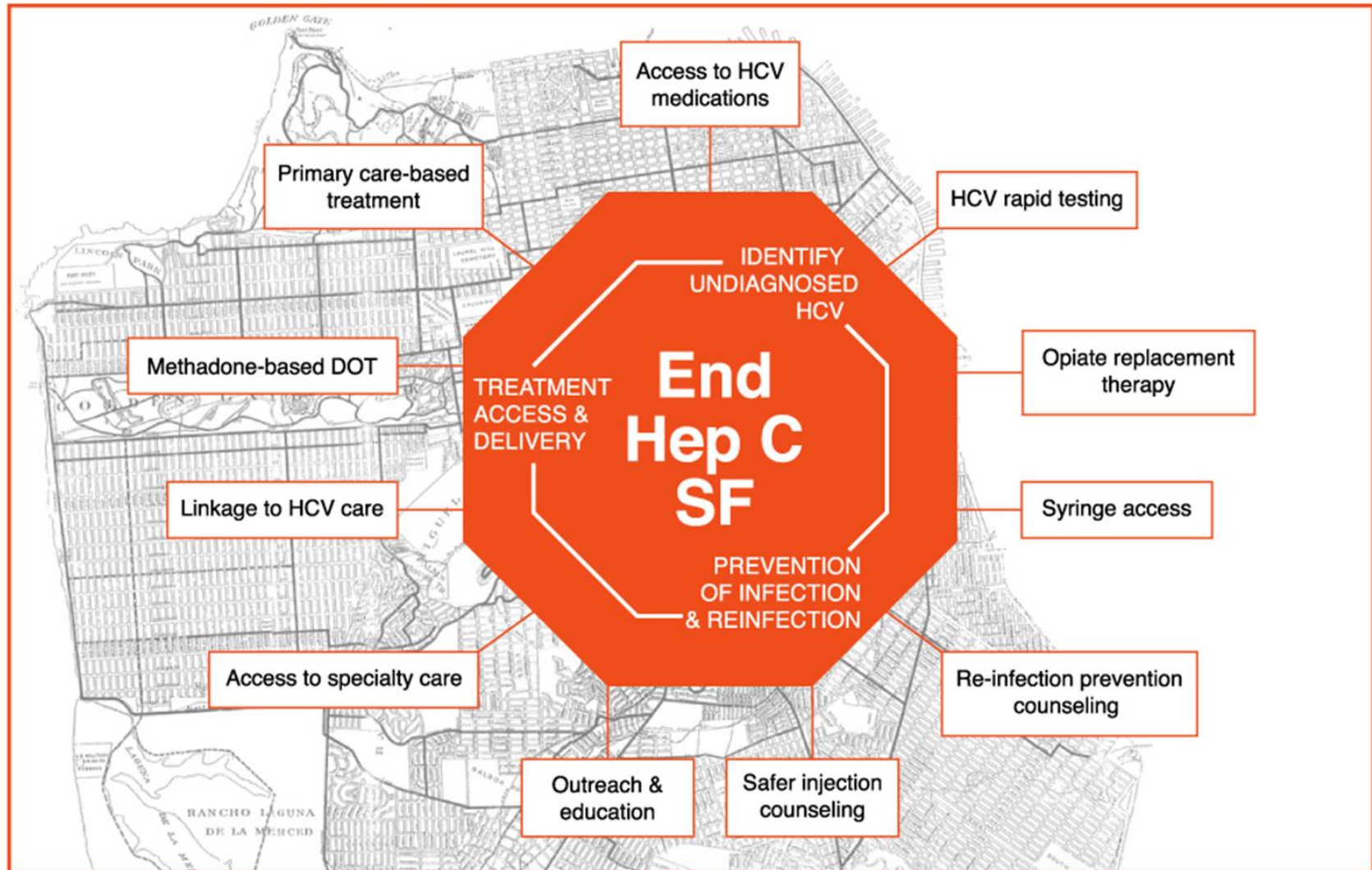
#5 Increase access to curative therapies.

Get outside the
4-wall clinic!



- Shelters
- Methadone programs
- Street Medicine
- Syringe exchange
- Mental health clinics
- Supportive housing
- Residential treatment programs

End Hep C SF



Thank you



Katie Burk
HIV Set-Aside and Viral Hepatitis Coordinator
katie.burk@sfdph.org

